

THE BRIXTON SOCIETY NEWSLETTER

Winter issue, February 2024

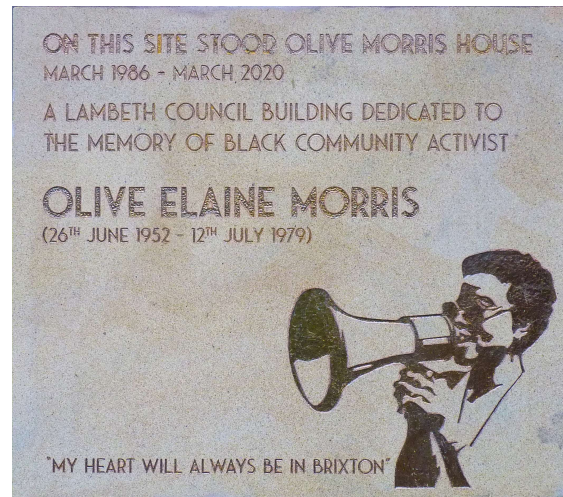
No.252, Quarterly issue,
Distributed free to members.

Member of the London Forum of Amenity
Societies, Registered charity no. 1058103,
website: www.brixtonsociety.org.uk

Lambeth Archives move to Brixton

Following its move from the Minet Library, Lambeth Archives has reopened in its new home at 16 Brixton Hill SW2 1ET, on the ground floor of Centric House, a new residential block on the site of the former Council offices at Olive Morris House.

The new premises includes a reading room for the public to access the archives, increased storage space for the borough's records in the basement, and a new meeting room, the Olive Morris Room, named in honour of the local black activist and feminist who died in 1979.



*Memorial plaque to Olive Morris
mounted by the entrance to the Archive*

Initially, visits are by appointment only.
Appointments may be booked by emailing
archives@lambeth.gov.uk

There are no plans for the library at Minet to move. The council is committed to delivering 10 libraries across the borough and the move of the Archives does not mean the library will also move. The Culture 2020 report was the last decision report which mentioned Minet Library and the library staying in the same place was in this report. A good library is needed in this area and the move of the Archives will allow the library service to be improved and offer wider services.



We apologise for the lateness of this edition of the newsletter owing to production difficulties.

Diary and Events

Walk this way...

If your New Year resolution was to get out more, we should be able to help. We have finalised our guided walks around the wider Brixton Area for this year. They start from April and are all on the Events Calendar on our website. The Lambeth Local History Forum (LLHF) is again producing their Walks Leaflet which will have a bumper list of over 90 walks. We aim to distribute the Walks leaflet with our Spring Newsletter. Monthly Brixton Market walks commence on 9 March, 13 April etc. Book through the events page on the website.

Visits & Tours

We are following up an offer of an introductory print-making workshop with the Slaughterhaus Studio at Vincent's Yard, off the south end of Hackford Road – more details to follow once confirmed.

Displays and bookstalls

We like to appear at public events around the Brixton area, but since we depend on members volunteering to move kit and to staff our stall, we need early warning of dates to get our act together. Unfortunately, changes to the format of the Lambeth Country Show have made attendance beyond our capacity. However, we will be at the Lambeth Local History Fair on Saturday 7th September, which this year will be held in Streatham. Full details will be in our July Newsletter and on our website. We hope to attend other local events as we are able. Volunteers to help will always be welcome.

Editorial Notice

Space permitting, we try to feature local events, issues and reminiscences in our newsletter. We welcome news and comments from all who are interested in the Brixton area, so opinions expressed in these pages are not necessarily those of the Brixton Society. All material should be sent preferably by e-mail to info@brixtonsociety.org.uk (before Easter please) or to the Secretary, Alan Piper, 82 Mayall Road, SE24 0PJ

Architecture up close

We will likely use the **London Festival of Architecture** in June to highlight any local events, though the Brixton BID is not taking part this year. We can confirm that London **Open House** events will spread over 14-22 September.

Remembrance Sunday

We gather that agreement has been reached to hold a single (afternoon) ceremony on Windrush Square next time, rather than the morning and afternoon events that have occurred in recent years.



Veterans march on Windrush Square for the Sunday morning commemoration, November 2023.

Committee Dates

Our Executive Committee meets monthly, at 7 pm on the second Thursday, to plan activities and agree our response to current issues.

Meetings are at the Vida Walsh Centre, 2b Saltoun Road SW2, facing Windrush Square.

These meetings are open to any of our members, but if you want to join in or to raise a specific issue, please contact the Secretary a week prior at info@brixtonsociety.org.uk

The next few dates are:

- 14 March
- 11 April
- 9 May

Diary and Events

Dulwich Picture Gallery

Their next special show is Soulscapes from 14 February, an ambitious exhibition of landscape art from artists from the African Diaspora, curated by Lisa Anderson, director of the Black Cultural Archives. Over 30 modern works will on show, embracing painting, film, photography, textiles and collage. Find more details at the gallery's website:

www.dpg.art/whats-on

Bus P4 from Brixton passes the gallery, or bus 37 to North Dulwich station and walk through the Village.

Friends of Brixton Windmill

Regular activities on a weekly basis include Yoga with Wild Balance, Pilates for 50+, Joy of Sound Session, Tai Chi in Windmill Gardens, Wednesday Warm Space and Thursday Morning Community Club. Plus bookable workshops, and the first guided tours on Open Weekend 30 and 31 March. They are looking for new Trustees and a Treasurer. See www.brixtonwindmill.org/all-events/regular-activities

Garden Museum, Lambeth Palace Road SE1 7LB

New exhibition Gardening Giverny (Monets garden) - 13 Mar - 24 Apr 2024. Spring Plant Fair 14 Apr 2024 10:00 am - 4:00 pm. Plus various talks, workshops.

www.gardenmuseum.org.uk

South Lambeth Botanical Institute

The South Lambeth Botanical Institute (SLBI) is featuring trees in February:

The Mystery of the Yew, Tuesday 20th February 7pm - 8pm (online talk)
Why are 73% of all the UK's large and ancient yews found in churchyards?

Want to know more about a tree near you? SLBI tree experts will identify your tree and share some knowledge on it.

www.slbi.org.uk

Brockwell Park Community Greenhouses

Repair, Recycle and Refresh

March 3 @ 12:30 PM - 3:00 PM

Join BPCG for a free afternoon of repairing and recycling! From darning your favourite jumper to sharpening those secateurs, come and learn from our community and give those much-loved items a much-needed refresh.

Plus workshops on tool sharpening and making nettle thread and an opportunity to find out all about Brixton Remakery's 'Materials Garden'

www.brockwellgreenhouses.org.uk/event/repair-recycle-refresh

Nelly's Lambeth Cemetery Walk 7 April 2pm

Nelly's Lambeth Cemetery walk led by Tracey Gregory and Geoff Simmons was so popular last year they are doing it again this year. Sharing some of the stories of people buried in Lambeth Cemetery including Nelly Roberts, lots of music hall stars, the sausage king and more. Book:

www.nellyslambethwalk.eventbrite.co.uk

Lost Places An LGBT Anthology edited by Jeffrey Doorn

This anthology edited by Jeffrey Doorn from Friends of the Carnegie Library has just been published and contains several pieces of local interest.

Places that LGBTQ+ people remember as significant helped shape who we are and how we relate to the world. This anthology of 19 prose and poetry pieces by 14 authors recollects lost places – redeveloped, demolished, rebuilt, or no longer gay-friendly.

Published by Paradise Press (ISBN 978-1-90-4585-94-7). Paperback, 132 pages, £7.99

Planning

Renewed Interest in creating a Neighbourhood Plan

The Brixton Neighbourhood Forum was set up in Summer 2011 with a view to devising a Neighbourhood Plan that would reflect the needs and aspirations of the community rather than the ambitions of developers or Lambeth Council planners. As it turned out, there was not much in the Council's Masterplan that we disagreed with, so the Forum in recent years has prioritised sharing information to help local groups and community organisations to attract support and network together.

After a dozen years, it's becoming clear that planning policies are not keeping up with our current concerns. Perhaps it is now time for the community to put forward its own ideas? Rather than cover everything, we may be more effective if we focus our energy on a few key issues or sites. Suggestions so far include public spaces and the night-time economy. But if there are other matters or sites that you think should be included, you need to tell us NOW.

Meanwhile, we will be sounding out other Forums who have already been down this route, and scoping out a series of consultation events for the months ahead.

Initial comments and enquiries to Alan Piper (Forum Secretary) at apiperbrix@aol.com



Brixton Station Road, a year ago (IMG0526.jpg)

Planning for Greater London as a whole

Politicians thoughts are now turning to the elections for the Mayor and Assembly in May. The government has reduced the prospects of smaller parties by reverting to a "first past the post" system, to there might be a change of control and direction this time.

Whatever the outcome, one of the items in the Mayor's pending tray will be a review of the Greater London Plan. In effect, this is an ongoing process, with several policy guides being published during 2023 to amplify and support the current plan. Most of these will have closed for comments by the time this reaches you, though the guide on Industrial Land and its uses remains open for comment until Wednesday 28 February.

Most planning decisions are in the hands of the local borough councils, but experience of the Hondo Tower project showed that the Mayor and his team of planners can still intervene in larger developments, so we need to keep an eye on these London-wide policies.

We were represented at a couple of recent discussions among amenity societies and campaign groups.

The **London Forum** held an on-line meeting on 15 November to examine the recent guides on site capacity and design codes for smaller sites. The latter approach can result in "type approval" for forms of new housing or extensions to be rolled out widely within a district or borough, with less scope to object to individual cases – a bit like the "permitted development" rules.

A more wide-ranging review of planning and regeneration issues across London was a gathering held by **Just Space** on Saturday 18 November. This event was hosted by UCL and chaired by veteran campaigner Michael Ball. It sought to highlight key issues in order to get a better London Plan that "enhances London life rather than tramples over it". This will be followed up with another Just Space Conference on **Saturday 2 March**.

Matters aired included housing stress, land values and disposals, the climate emergency, tall buildings, high streets and markets, and community audits and involvement.

Some groups highlighted that where large developments straddled borough boundaries, the GLA seemed reluctant to play a co-ordinating role. This probably reflects the way the GLA was set up, with more limited powers and resources than the pre-1986 GLC.

Planning

National Changes

The situation in recent years has been that the government keeps announcing impending changes to the Planning system, but is slow to follow up with actual legislation or regulations. It may just be that individual ministers don't stay around long enough to sign the paperwork! Energy efficiency has suffered particularly badly, with the government regularly kicking this can down the road.

The long-awaited increase in charges for planning applications finally happened on 6 December, the first since 2018, with annual increases now expected from April 2025 onwards. A new edition of the National Planning Policy Framework (NPPF) was also launched before Christmas, though its main role is to fill any gaps not covered by local councils' planning policies.

Other changes promised include more "permitted development" that will not need a planning application, but you should always check the position with a reliable source like the Planning Portal, rather than trusting reported comments from ministers.

Meanwhile, in your backyard...

The most frequent concerns reported to us are proposals from neighbours that intrude on residents' privacy or daylight, or proposed new uses that threaten to introduce smells, noise or extra traffic. We try to help, particularly when our own members or kindred groups are at risk, but please remember that we are only doing this in our spare time. That means we need to hear from you as soon as you see a notice from the Council or developer. Do not rely on telepathy or social media – e-mail directly to planning@brixtonsociety.org.uk. The timescales for responses are very tight so any delay reduces the scope to prevent or lessen the damage, or to build-in safeguards.

Yet once the deadlines have passed, the process seems to slow down, as if the Council or developers hope that objectors will lose interest and go away. Sometimes though we can make a difference. Our objections to 24-hour operation of a gaming arcade at 371 Brixton Road were successful, and unusually the planners wrote to tell us of the outcome.



1-3 Brixton Road, showing frontage to Camberwell New Road (Db/CU-2018-06-01-02.jpg)

Brixton's slowest development?

Our last guided walk of the 2023 season took us past the large complex of industrial buildings at 1-3 Brixton Road. This began as a large garage for motor taxis about 1906, but was much expanded in 1924 as the Brixton Industrial Estate. Over the past century, it has accommodated a wide range of manufacturers and other businesses. Since the takeover of Brixton Estate plc by Slough Estates, the site has officially been the Kennington Park Business Centre.

There have been various proposals for rebuilding, including a massive supermarket proposed in the late 1980s, but to its credit, Lambeth has tried to ensure the site remains in employment uses.

We were only recently advised of the outcome of a planning application originally made back in 2019 for partial rebuilding, mostly of blocks in the centre and rear of the site.

Typically for a major development, the planning consent came with 48 conditions attached, so there will need to be a series of minor applications over the next year or two for approval of details etc – assuming the developers still want to go ahead, given the increased interest rates and deteriorating economic prospects since the project began.

Alan Piper.

NB: When we comment on individual planning applications, or on policy changes, we try to post our comments on the Brixton Society website.

Planning

Site Allocations

Lambeth Planners have their eyes on several sites around Brixton for major developments. We sent in detailed comments on the draft proposals for each site exactly two years ago, but when the latest version went before Lambeth's Cabinet recently, no concessions seemed to have been made.

A particular concern is the Tesco site in Acre Lane, where the planners are encouraging residential development above, but far higher than is compatible with the surrounding homes and the adjacent Trinity Gardens conservation area. Residents in Baytree and Porden Roads are beginning to organise to resist, and we are offering support as best as we can.

Conservation Area (CA) changes.

Changes to Central Brixton, Ferndale and Loughborough Park Conservation Areas went ahead in January. We submitted detailed comments on Central Brixton and Loughborough Park. In Central Brixton we recommended including the Brixton Recreation Centre and International House. The council rejected our recommendation commenting: "It is felt that those large, modern buildings are at odds with the characterful fine-grain historic townscape".

Also rejected was our objection to the moving of Character Area 3 of the Loughborough Park CA into the Brixton CA. 322-372 Coldharbour Lane Parts of Valentia Place and Gresham Road, including the Gresham Baptist Church will now move from the Loughborough Park to Brixton Conservation Area.

In the Ferndale CA area, the Brixton School of Building is being removed from the CA. Our proposal to include 65-69 Bedford Road has been rejected.

So far the revised proposals do not include any mention of the Brockwell Park Conservation Area where Historic England have recommended that the boundaries of the CA should be extended to include the Cressingham Gardens Estate.

Your views on viewpoints?

The February Committee discussed our response to the Council's latest draft Planning Guidance on local views, skylines and panoramas. Most examples are near the Thames, but for Brixton there are two key viewpoints northwards from Brockwell Park, plus east-west views centred on two church spires – St. Michael's in Stockwell Park Road, and Christ Church in Christchurch Road. We discussed other key views such as the view of the Town Hall from the diagonally opposite corner (KFC), and the view from further back in Coldharbour Lane towards the Town Hall. We will be responding on all these.

The full version can be found via the consultation pages on the Council website, www.lambeth.gov.uk

The deadline for responses is **23 February**, contact planning@brixtonsociety.org.uk

Another Tower?

We have long been expecting another high-rise application at Loughborough Junction, close to the tower now nearing completion on the former Higgs Industrial Estate just off Coldharbour Lane.

It was finally announced in the South London Press on Friday 9th February. On industrial land between Hinton Road, Wellfit Street and Hardess Street, the proposal is for a tower rising 47.5m, to contain 320 "co-living" units. This will be rather like a student hostel for grown-ups, with communal facilities. A block 10m high alongside will replace the light industrial element. The application reference is 24/00073/FUL.

A similar concept was considered for the Lilford Road industrial estate, but abandoned in favour of new employment floorspace, now being built. In recent years, we have opposed several other large HMOs (houses in multiple occupation) because the management of shared facilities looked inadequate. We will be looking critically at this one too, but please tell us (and the Council) what you think.

Reporting Back

The Challenge of Anti-Social Behaviour (ASB)

Action on ASB held a well-attended public meeting at the Town Hall on 30 November, chaired by Ayesha Hazarika from the Dalryell Residents Association (and Evening Standard columnist). This was a follow-up to the previous meeting, held at Papa's Park on Pulross Road, and reported in the October issue of the Brixton Bugle.

There was a widespread feeling that problems had increased sharply in the past couple of years, particularly aggressive begging, drug-dealing and street sleeping.

The night-time economy has long been blamed by Town Centre residents for noise, rowdiness and for streets and forecourts being treated as public toilets, but the extended closure of the largest venue, the Academy, seems to have made no difference. This has been exacerbated by the decision by the police in mid-2023 to disband the dedicated central Brixton police team.

Several of these issues had also been raised at recent meetings of the Brixton Business Improvement District, and the Brixton Neighbourhood Forum. This time both the police and the council were represented in numbers, but there was still one essential service missing, mental health. This is a factor in many cases of homelessness, drug addiction and anti-social behaviour.

The Metropolitan Police had already expressed their reluctance to continue covering for the lack of mental health care, which rarely ends well. Local police strength has declined, though belated efforts are now being made to restore it. Efforts were promised to improve liaison with (and within) the council. Residents and businesses were urged to report crimes, at least to help make the case for attracting more resources to sustain local initiatives. Peter Impey of Action on ASB reported that even before this meeting, they had signed up over 20 local groups and 100 individuals, initially in SW9 but

now extending into SW2. The meeting ended with a call for an action plan and timetable to be presented by the authorities in March.

Action on ASB can be contacted at aoasb@outlook.com

Herne Hill Comparisons

The Herne Hill Forum held their own meeting on local crime and anti-social behaviour not long after the Brixton meeting. Their forum covers a more prosperous residential area stretching from Poets Corner to the edge of Dulwich Village, so inevitably there is a different balance of issues, though several are still shared with Brixton. This was reflected in more emphasis on crime prevention advice. There is also the challenge of straddling borough boundaries between Lambeth and Southwark, though the police command is already shared. Helpfully, councillors from both boroughs took part.

Following up

Since the above meetings, representatives of Action on ASB have met with the police and with Brixton's Business Improvement District (BID). The BID recently enlisted support from the Safer Business Network to help reduce crime around the shopping centre. The police have also taken the decision to replace a number of posts dedicated to Brixton Town Centre. Action on ASB have also confirmed that the Brixton-wide follow-up meeting will be at the Town Hall on Wednesday 27 March.

Some long-awaited positive news is that the Safer Neighbourhood Panels are finally getting underway to match the current council ward names and boundaries. They meet quarterly with the police team working in that ward. Brixton North SNP met on 23 January and Brixton Windrush SNP on 1 February for example. You can find information about your local team on the Met Police website – Your area. You can see the priorities set for your Ward by the Panels, the levels of crime recorded, and how to contact your team. www.met.police.uk/area/your-area

Alan Piper

Reporting Back

Lambeth Civic Awards

Lambeth Council has revived its Civic Awards programme after a gap of a few years. 370 individuals or groups were proposed across 11 categories. Shortlists were out in December and featured familiar names including Pastor Lorraine Jones, Simon Hooberman, Pamela Price, and veteran community activists Jean Kerrigan and Hazel Turay. Also local projects the Friends of Windmill Garden, the Black Cultural Market, the Platform Café, and the St. Matthew's Project were shortlisted.

Winners were announced on 7 February at Lambeth Town Hall. Locally, the Black Cultural Market won the Outstanding Business Award, the St Matthew's Project won the award for Sporting Achievement, and Jean Kerrigan was runner up for the Innovative Local Service Award

A full list of winners is on the Lambeth website

Campaigning for a Lift for Loughborough Junction

The Loughborough Junction Action Group want to see a lift at Loughborough Junction. This would make the platforms accessible for prams, bikes and disabled passengers You may not realise how busy this station now is as it offers a cross-London service and is used by workers and patients at King's College Hospital. Over 721,000 passengers a year at present. National Rail opens its Access for All programme - when it decides which stations need to improve access - in spring 2024.

Here's the link to their petition:

<https://chnng.it/393NCcFXPZ> or enquiries to ljactiongroup@gmail.com

Recent Council Consultations

We responded before Christmas with comments on Lambeth's draft Housing Strategy, which was long overdue for an update.

We also fed into the **People's Green Housing Charter** together with other grassroots groups.

Lambeth Council also recently invited comments on how support should be provided for a wide range of voluntary and community groups. Presently a package of services is

delivered by the **Integrate Agency**, including training, funding advice and regular sharing of relevant information, but their contract expires in April. However, there is no longer any entity speaking on behalf of the voluntary sector across the borough, and there are limited opportunities for networking among kindred groups.

Where are we from?

In a quiet interval between the Heritage Festival and our November events, I had a look at our mailing list to see how our membership is distributed.

The top postcode is SW2 with 83 members, though this does stretch into Streatham Hill. Runner up is SW9 with 39 members. SE24 extends into our area with 11 members, with smaller overlaps into SE5 (5 members) and SW4 (3). 18 others are spread across 16 more London postcodes. Outer London accounts for 4 more in the south-west and 2 in south-east boroughs. That leaves 10 more members – mostly ex Brixton residents - beyond Greater London, from Wales to Belgium.

Alan Piper

Loughborough Road Histories

Tracey Gregory continues to add to the wealth of information on the shops, buildings and people of Loughborough Road. Her stories can be found on her blog post site here: loughboroughroadsw9histories.wordpress.com

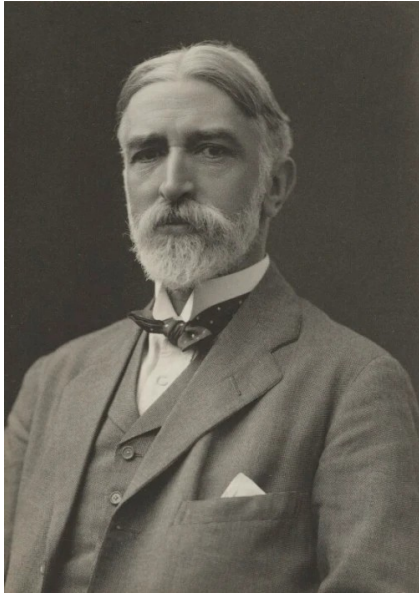
This is an extract from the blog:

Loughborough Road takes its name from the 1st Baron Loughborough, Henry Hastings, who lived in his manor house of Lambeth Wick which became known as Loughborough House.

Henry Hastings, born in Loughborough, Leicestershire in 1610, was a Royalist and Charles 1 supporter in the English Civil war. He was ennobled in 1643 for his role fighting Parliamentarians in Leicestershire. Hastings was exiled in 1648, fleeing to Holland, but he returned to England in 1661 living his final years until his death in 1667 at Loughborough House.

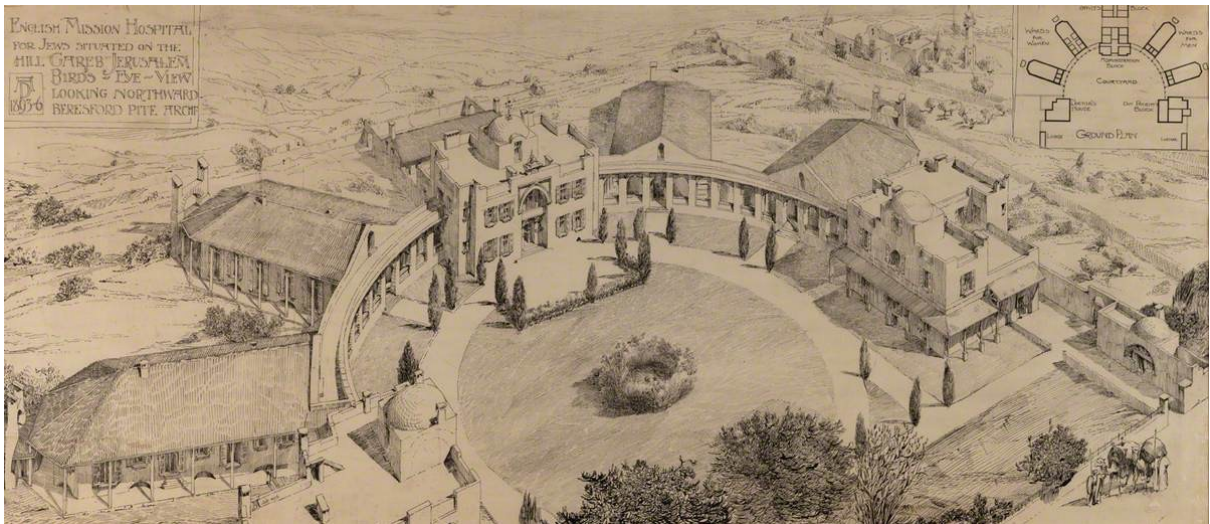
Local History

Beresford Pite – Edwardian architectural high-flyer with global reach and strong links to Brixton.



Pite, Arthur Beresford 1861 – 1934

Arthur Beresford Pite was born in Walworth and studied at the National Art Training School in South Kensington. He was articled to a family architectural firm from 1876 to 1881 and during these years he attended University College London. In 1882 he won the Soane medallion of the Royal Institute of British Architects and joined architect John Belcher in London as an improver, subsequently becoming his managing clerk. In 1883 Pite was admitted as a student at the Royal Academy Schools in London. He qualified as an architect in 1887 and the following year was elected an Associate of the Royal Institute of British Architects (ARIBA); elected a Fellow (FRIBA) in 1896. He commenced independent practice in London 1897 and lived in Brixton during his mid-life years with his family*. From 1900 to 1923 he was Professor of Architecture at the Royal College of Art in London. He was also a Professor at Manchester School of Architecture and taught at the University School of Architecture, Cambridge. He was Architectural Director of LCC School of Building in Ferndale Road Brixton from 1905 to 1928.



Drawing from The Builder 1896

An early commission was the English Mission Hospital for the Jews in Jerusalem, paid for by a donation from the Count and Countess of Meath. This was a progressive sanatorium design with spaced out treatment blocks. The building still exists today – repurposed as an Anglican School



Its entrance (*left*) design is similar to that of the Church Hall of Christ Church Brixton Road – located on Mowll Street. The hall was completed in 1898 and used for worship prior to the completion of the main church in 1902. The church hall has a large Dioclesian window (so-called after the Baths of Dioclesian in Rome) under a belfry.

Local History



Church Hall of Christ Church Brixton on Mowll Street. Now, Mowll Street Business Centre.

Pite designed the fifth Namirembe Anglican Cathedral in Kampala Uganda in 1910. This building on a Kampala hill top has clear stylistic similarities to Christ Church North Brixton. Building was started in 1913 and the cathedral consecrated in 1919. An earlier brick cathedral on the site had been struck by lightning and burnt down. This had replaced two earlier buildings with thatched roofs deemed unsafe. The present cathedral contains the remains of the first Bishop of East Africa James Hannington who is considered a martyr.



Namirembe Anglican Cathedral in Kampala Uganda

Local History



Another smaller project in Brixton was the church hall for St Saviour's Church in Herne Hill Road. (*left*) This charming design has recently come into its own as the main St Saviour's Church on Herne Hill Road (designed by AD Gogh, built 1867) became unsafe and was demolished around 1980. Beresford Pite's church hall of 1913 was then rearranged as a replacement church for St Saviour's Parish.

Perhaps the most prestigious building he designed was the headquarters of the London, Edinburgh and Glasgow Assurance Company at 30 Euston Square (*below*). It was a magnificent building of Portland stone, Grecian in style and spanning seven floors. The building took two years to build and was opened on 22 January 1908. The new office building was fitted with a passenger lift, electric lighting, and oil-fired central heating ; it was modern for its time. The building is Grade II* listed.



Pite stayed in London until 1930 when he moved to Beckenham, Kent to live near his brother William and this is where on 27 November 1934 he died from exhaustion and skin cancer. He is buried in London at West Norwood Cemetery.

David Warner

* FOOTNOTE

The 1901 census has him living at 9 St. John's Road (now St. John's Crescent) with his wife, Mary, a daughter, two sons, and three servants.

Miscellany

Black Cultural Archives



BCA are hosting a new exhibition for February: Bob Marley: One Love Exhibition at Black Cultural Archives. Visit this exhibition to celebrate the release of *Bob Marley One Love* in cinemas February 14. Paramount Pictures UK and Black Cultural Archives have teamed up to host an exhibition on Bob Marley showcasing his presence in London in the 70s via BCA's archive, a collection of film stills from *Bob Marley One Love*, as well as local artist inspired renditions of artwork for the film from around the globe.

A great opportunity to see how Bob Marley, his music and his philosophies had a lasting cultural impact on the UK and specifically London!

Bob Marley: One Love Exhibition
Saturday, 3 February 2024, 10:00 -
Sunday, 25 February 2024, 17:00

BCA regularly open Thursdays – Saturdays
10:00 – 18:00 and Sundays 12:00 - 17:00

Tate Library gets a makeover

Brixton's Tate Library, has reopened after closure to allow refurbishment works to be carried out. Improvements include upgraded toilet facilities, a new dedicated children's toilet, and a new lift to the basement so that the basement areas can be opened for more activities to be delivered.

Private rented properties consultation

Lambeth are consulting on proposals to introduce a selective licensing scheme in Lambeth which they say will improve the standards of privately rented properties in the borough. Consultation closes 4 March.

www.lambeth.gov.uk/consultations/have-your-say-licensing-privately-rented-properties-lambeth

Brixton's Papa's Park, Pulross Road gets Lambeth support

Good news that Crowdfund Lambeth have match-funded pledges from 35 supporters with £1,000 to help raise more than £2,400 to pay for essential repairs to the playground in Papa's Park. Within 56 days of launching a crowdfunder for funds the total raised was £2,142 (and £227.50 gift aid) contributed by 35 supporters. Papa's Park is a community-run garden, playground and cafe in the heart of Brixton. The park is run by a committee of 12 dedicated volunteers plus many, many friends and neighbours who help look after it from about 9am until dusk each day. If you're interested in joining the volunteers at Papa's Park, email papasparkltd@gmail.com

Black Culture Market - Spring Market

Saturday 6 Apr, 11:00

Celebrating producers of the African & Caribbean community. If you're looking for gifts, cards, unique prints, jewellery, male grooming kits, skincare, clothes or other original accessories come downstairs at The Department Store, Ferndale Road, Brixton. Winners of the Outstanding Business Award Free but register for a ticket at

<https://www.blackculturemarket.co.uk/>